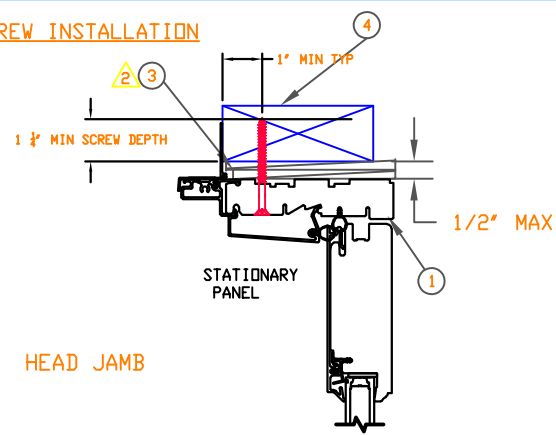
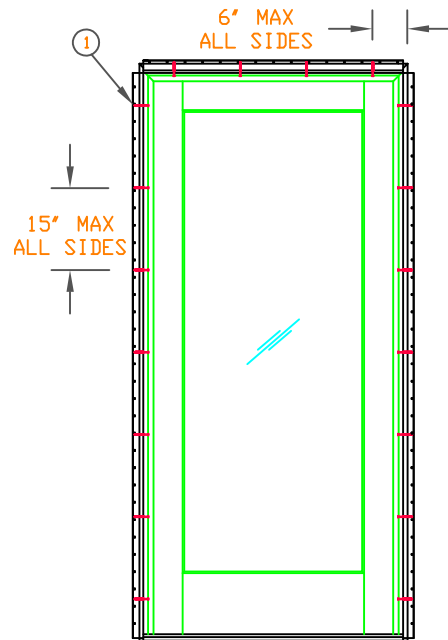
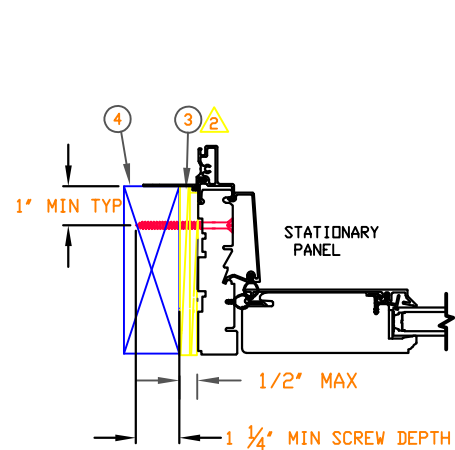


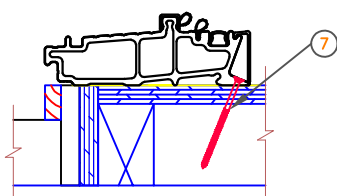
**JAMB SCREW INSTALLATION**



HEAD JAMB



1 PANEL DOOR SHOWN, SPACING APPLIES TO 1 PANEL DOORS



**JAMB SCREW INSTALLATION METHOD:**

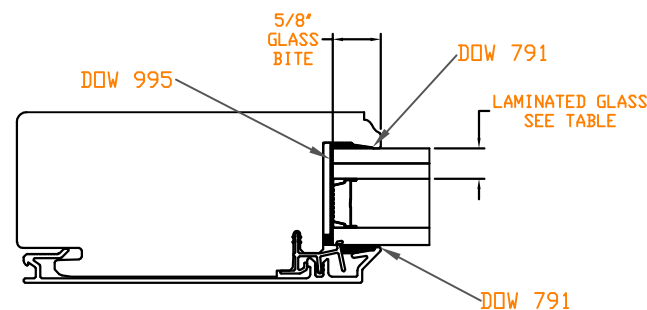
- UNIT MUST NOT BE IN DIRECT CONTACT WITH EITHER CONCRETE OR TREATED BUCK MATERIAL. IF SHIM SPACE IS LESS THAN 1/8" WRAPPING THE JAMBS AND HEAD JAMBS WITH WINDOW FLASHING TAPE IS REQUIRED AS A BARRIER BETWEEN THE UNIT AND CONCRETE OR TREATED LUMBER.
- SECURE THE JAMBS AND HEAD JAMB WITH #8 X 3" SCREWS SPACING 6" FROM CORNER AND 15" OC
- MINIMUM OF 2 PER SIDE.
- SHIM AT EACH SCREW LOCATION
- APPLY #8 X 1 1/2" SCREWS THROUGH SILL SPACED 4" FROM BOTH ENDS AND 15" OC
- NAILING FIN SHOWN BUT IS OPTIONAL

**NOTES:**

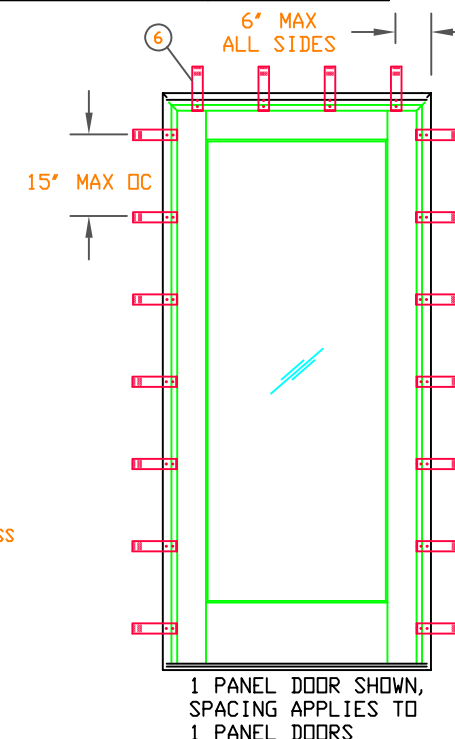
- THIS PRINT IS FOR STRUCTURAL PERFORMANCE ONLY. FOR FLASHING & SEALING REQUIREMENTS, REFER TO THE INSTALLATION INSTRUCTIONS.
- SHIMS:
  - A SHIM MUST BE PLACED 4-6" FROM EACH CORNER.
  - ALL OTHERS MUST BE PLACED A MAX OF 15 INCHES APART.
- IF CHEMICALLY TREATED LUMBER IS USED FOR BUCK MATERIAL, FASTENERS INTO THE BUCK MUST BE A MINIMUM OF 0.90 OZ/FT<sup>2</sup> ZINC HOT DIPPED GALVANIZED OR STAINLESS STEEL TYPE 304 OR 316.

UNIT	MAX PANEL WIDTH	MAX FRAME SIZE	DP RATING	GLASS OPTION
UL INSDR 2.25 IZ3	41 1/8"	43 7/16" X 98"	+65/-65	A
UL INSDRDR 2.25 G2 IZ3	41 1/8"	43 7/16" X 98"	+65/-65	A
UL INSDRDR 2.25 G2 IZ3	41 1/8"	43 7/16" X 122"	+65/-65	B
UL INSDRDR 2.25 SL G2 IZ3	41 1/8"	43 7/16" X 122"	+65/-65	B

TYPE	LAMINATED GLASS MAKE UP	EXT LITE
A	3.0mm(.122") ANN + .090 SGP interlayer + 3.0mm(.122") ANN	4.7mm T
B	3.9mm(.156") ANN + .090 SGP interlayer + 3.9mm(.156") ANN	5.7mm T

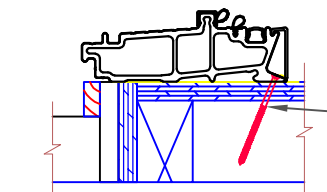
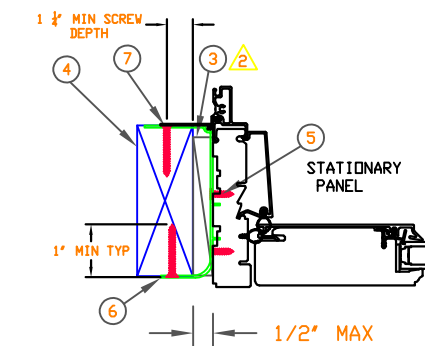
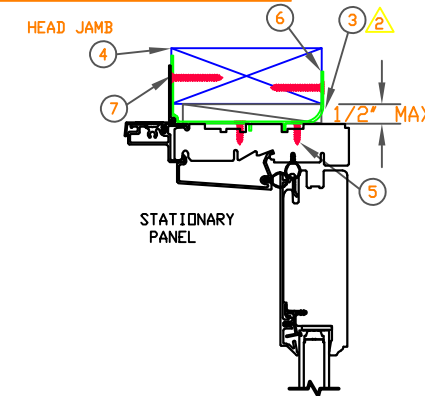


**GLAZING DETAIL**



1 PANEL DOOR SHOWN, SPACING APPLIES TO 1 PANEL DOORS

**STRUCTURAL BRACKET INSTALLATION**



**STRUCTURAL BRACKET INSTALLATION METHOD:**

- UNIT MUST NOT BE IN DIRECT CONTACT WITH EITHER CONCRETE OR TREATED BUCK MATERIAL. IF SHIM SPACE IS LESS THAN 1/8" WRAPPING THE JAMBS AND HEAD JAMB WITH WINDOW FLASHING TAPE IS REQUIRED AS A BARRIER BETWEEN THE UNIT AND CONCRETE OR TREATED LUMBER.
- MINIMUM OF 2 BRACKETS PER SIDE.
- SCREWS LISTED BELOW MUST BE FULLY EMBEDDED.
- ATTACH TO THE UNIT WITH TWO #8 X 5/8" SCREWS.
- ATTACH TO THE BUCK WITH TWO #8 X 1 1/2" SCREWS ON EACH SIDE OF THE BUCK.
- APPLY #8 X 1 1/2" SCREWS THROUGH SILL SPACED 4" FROM BOTH ENDS AND 15" OC
- NAILING FIN SHOWN BUT IS OPTIONAL

**CATEGORY:**  
SWINGING FRENCH DOOR

**UNIT TYPE:**  
UID 2.25 IZ3, UIFD 2.25 G2 IZ3, UIFD 2.25 SL G2 IZ3

		UNSPECIFIED TOLERANCES	
8	-----	#10 X 3" WOOD SCREW	DECIMALS: .03
7	-----	#8 X 1 1/2" SCREW	ANGLE DEG: ± .5
6	-----	STRUCTURAL BRACKET	XXX ± .012
5	-----	#8 X 5/8" SCREW	LINEAL: ± NA
4	-----	2X WOOD BUCK BY OTHERS	+ .125
3	-----	SHIM	- .000
2	-----	#10 X 2 1/2" WOOD SCREW	MATERIAL: NA
1	-----	#8 X 3" WOOD SCREW	
ITEM NO	REF NO	DESCRIPTION	

**MARVIN** RESEARCH & DEVELOPMENT

COLLECTION: ULTIMATE

DWG TYPE: INSTALLATION  
DESCRIPTION: UID 2.25 IZ3 STAT, UIFD 2.25 G2 IZ3 STAT, UIFD 2.25 SL G2 IZ3

CHK:	SIZE: B	CLASS: MISC	DWG NO: 00132821
APP:	SCALE: NA	DATE: 1/13/2022	DWG BY: MARVIN\JacobB
			SHEET: 1 OF 1

**NOTICE - CONFIDENTIAL INFORMATION**

The information in this document is privileged and strictly confidential. The information contained herein shall be used only by Marvin Windows and Doors employees and by those agents or suppliers granted official written permission. If the reader of this document is not the intended recipient, or the employee or agent of the intended recipient, please delete this document from all data storage devices, and destroy all hard copies. Any unauthorized dissemination, distribution, copying or other use of the information contained in this document is strictly prohibited.